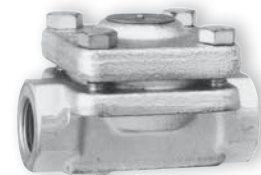
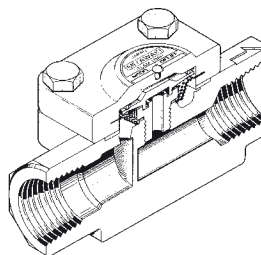
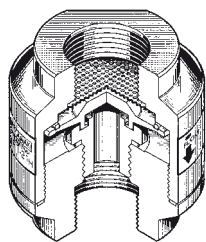


DL1

DX1

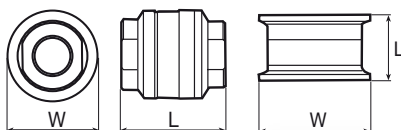
DF1



Dimensions

DL1

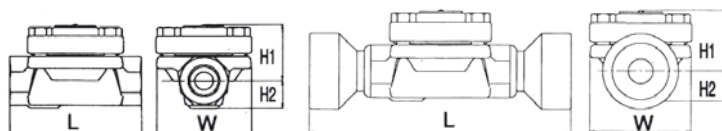
DX1



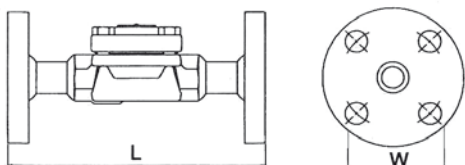
DF1

Screwed

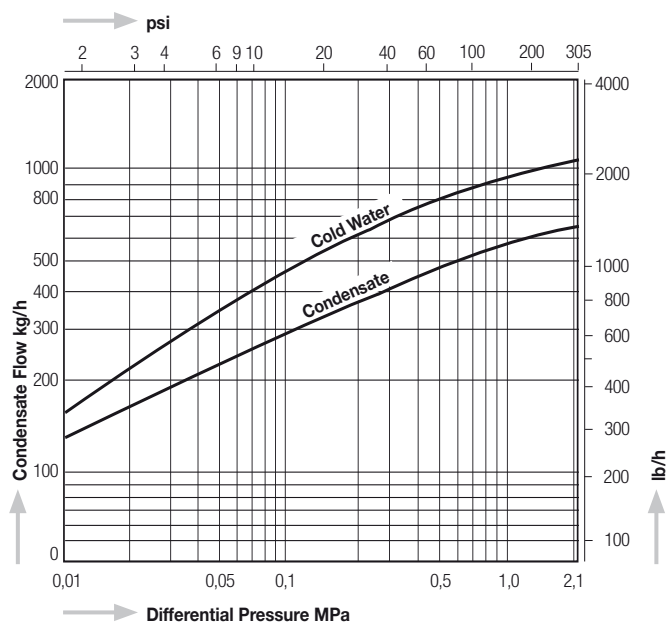
Socket Weld



Flanged



Capacity Charts DL1, DX1, DF1



Special face-to-face dimensions available.

Model	Connections	Size (in)	Max. Operating Pressure		Max. Operating Temperature		Dimensions (mm)				Dimensions (in)				Body Material	Weight													
			MPa	psig	°C	°F	L	H1	H2	W	L	H1	H2	W		kg	lb												
DL1-21	Screwed Rc, NPT	1/4"	2,1	305	220	428	60		48	2.4		1.9	Stainless Steel SCS13	0,7	1.5														
		3/8"																											
		1/2"																											
		3/4"																											
DL1-10	Screwed Rc, NPT	1/4"	1,0	145	220	428	60		48	2.4		1.9	Stainless Steel SCS13	0,7	1.5														
		3/8"																											
		1/2"																											
		3/4"																											
DX1-5 (DX1R-5)	Tri-Clamp	38 mm	0,5	72.5	160	320	30		51	1.2		2.0	Stainless Steel SUS316	0,2	0.44														
		1/2"														2,1	305	235	455	85	36	18	62	3.4	1.4	0.7	2.4	1,0	2.2
		3/4"																		100	40	23	62	3.9	1.6	0.9	2.4	1,3	2.9
		1"																		160	36	18	62	6.3	1.4	0.7	2.4	1,4	3.1
DF1-21W	Socket Weld JIS, ASME, DIN	1/2"	2,1	305	235	455	160	36	18	62	6.3	1.4	0.7	2.4	Forged Steel A105	1,4	3.1												
		3/4"																											
DF1-21F	Flanged DIN PN40, ASME 150, 300 lb	1/2"	2,1	305	235	455	150	36	18	62	5.9	1.4	0.7	2.4	Forged Steel A105	2,1	4.6												
		3/4"																160	40	23	62	6.3	1.6	0.9	2.4	3,3	7.3		
		1"																										4,0	8.8