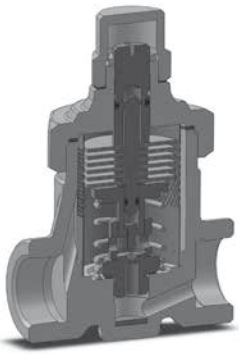
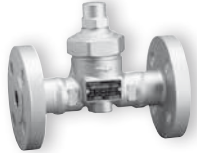


# TB7N



Screwed & Socket Weld



Flanged Connection



with Ball Valve



with Blow Valve

**Available options TB7N**

- with ball valve (TB7NB-C)
- with blow valve (TB7NB-R)

**Special version TB7N-P**

with maximum operating pressure 2,7 MPa / 392 psig

**Special** face-to-face dimensions available.

\* **Curve 1** shows the trap's maximum capacity when discharging cold condensate at a temperature of 20°C (68°F).

\*\* **Curve 2** shows the trap's maximum capacity when discharging hot condensate at a temperature of 10°C (18°F) below the adjusted temperature of the trap.

**Standard factory settings\*:**

100°C at 1,0 MPa (212°F at 145 psig)

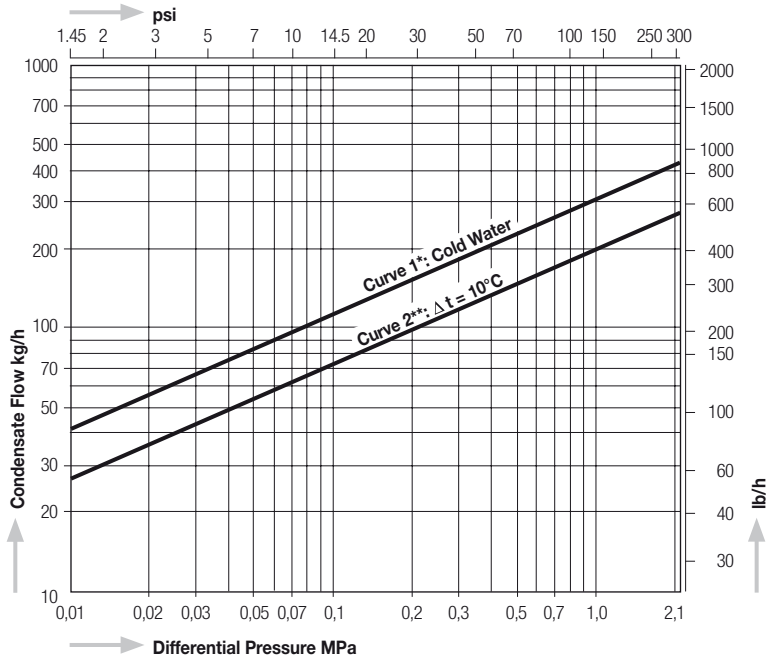
\* Settings may differ in various regions.

For more information please contact us.

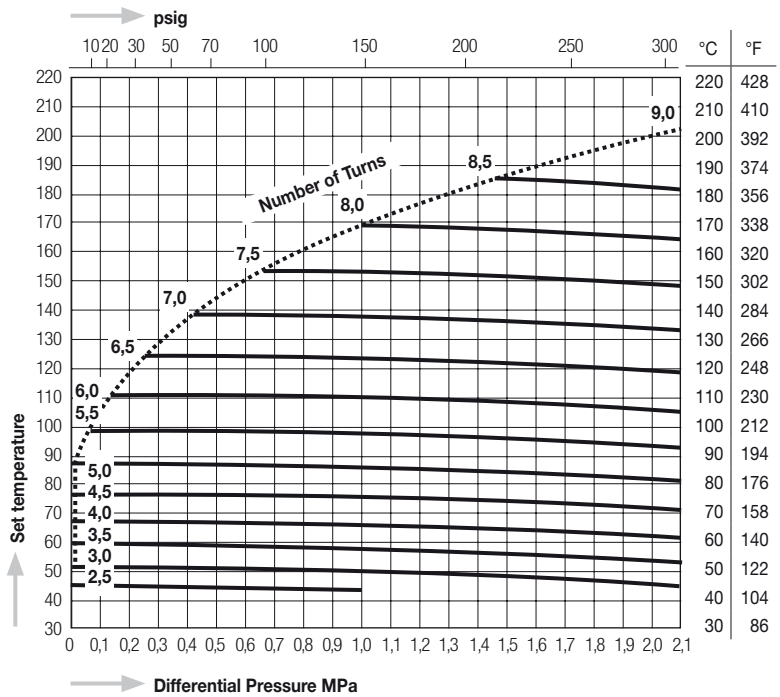
**Max. allowable pressure (PMA) = 4,0 MPa (580 psig)**

**Max. allowable temperature (TMA) = 400°C (752°F)**

Capacity Chart TB7N

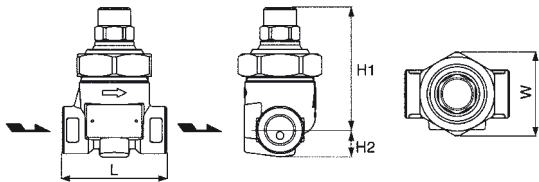


Temperature Stroke Chart TB7N

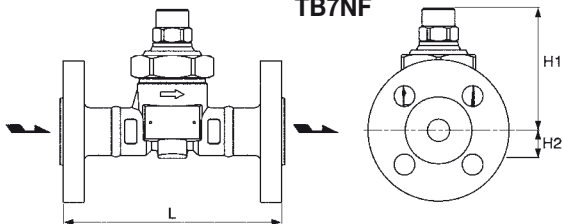


**Dimensions**

**TB7N • TB7NW**



**TB7NF**



Model	Connections	Size (in)	Max. Operating Pressure		Max. Operating Temperature		Adjustable Range		Dimensions (mm)				Dimensions (in)				Body Material	Weight	
			MPa	psig	°C	°F	°C	°F	L	H1	H2	W	L	H1	H2	W		kg	lb
TB7N	Screwed Rc, NPT	1/2"	2,1	305	350	662	50 - 200	122 - 392	70	18	18	2,75	0,7	Forged Steel A105	1,0	2,2			
		3/4"							82	19	56	3,1	0,75		1,1	2,4			
		1"							80	23	56	3,1	0,9		1,2	2,6			
TB7NW	Socket Weld JIS, ASME, DIN	1/2"	2,1	305	350	662	50 - 200	122 - 392	70	18	18	2,75	0,7	1,0	2,2				
		3/4"							82	19	56	3,1	0,75	1,1	2,4				
		1"							80	23	56	3,1	0,9	1,2	2,6				
TB7NF	Flanged JIS, ASME	1/2"	2,1	305	350	662	50 - 200	122 - 392	145	82	18	5,7	3,2	0,7	2,2	2,6	5,7		
		3/4"							18	19	56	5,7	3,2	0,75	2,2	3,1	6,8		
		1"							23	56	5,7	3,2	0,9	2,2	4,2	9,2			
	Flanged DIN PN40	15	150	82	18	56	5,9	3,2	0,7	2,2	2,7	6,0							
		20	160	82	18	56	6,3	3,2	0,7	2,2	3,3	7,0							
		25	160	82	18	56	6,3	3,2	0,7	2,2	3,9	8,6							