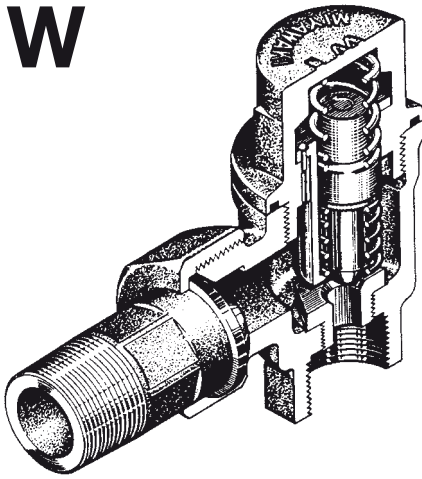


**W**

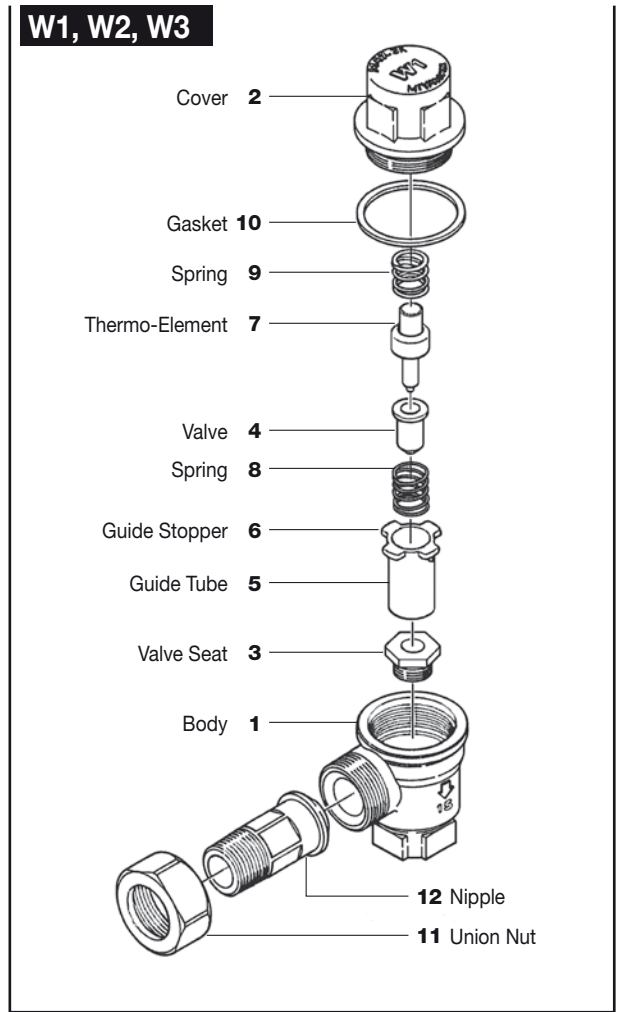


W1

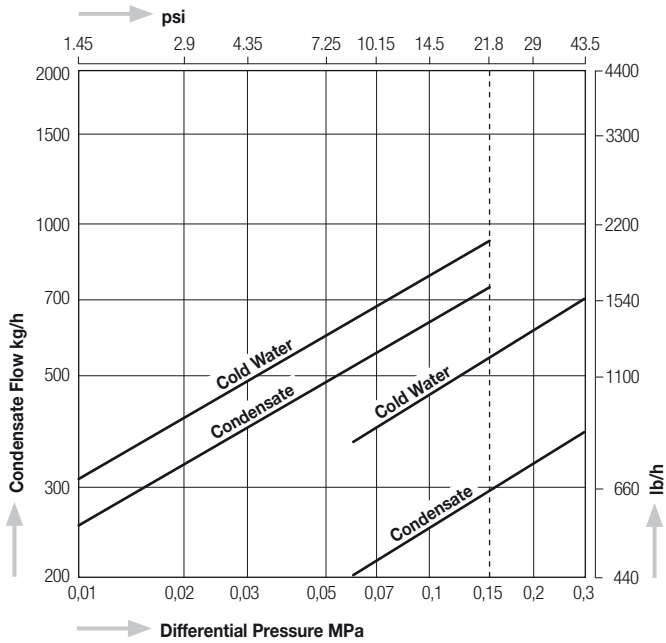


W2

**W1, W2, W3**



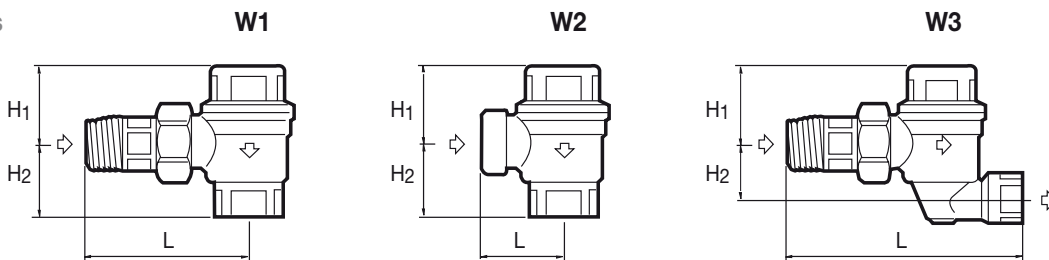
Capacity Charts W1, W2, W3



The opening temperature of the valve is preset

- at about 97°C (207° F) for W1-1,5, W2-1,5 and W3-1,5
- at about 115°C (239° F) for W1-3, W2-3 and W3-3

Dimensions



Model	Connections	Size (in)	Operating Pressure Range		Max. Operating Temperature		Dimensions (mm)			Dimensions (in)			Body Material	Weight	
			MPa	psig	°C	°F	L	H1	H2	L	H1	H2		kg	lb
W1-1,5	Screwed Rc, NPT	1/2"	0,01 - 0,15	1.45 - 21.8	150	302	80	39	35	3.1	1.5	1.4	Brass C3771	0,5	1.1
		3/4"					87		41	3.4		1.6		0,6	1.3
1/2"		0,06 - 0,3	8.7 - 43.5	80			35		3.1	1.4		0,5		1.1	
3/4"				87			41		3.4	1.6		0,6		1.3	
W2-1,5	Screwed Rc, NPT	1/2"	0,01 - 0,15	1.45 - 21.8	150	302	35	39	35	1.4	1.5	1.4	Brass C3771	0,4	0.9
		3/4"							41			4.1		1.6	0,5
1/2"		0,06 - 0,3	8.7 - 43.5	35					3.1			1.4		0,4	0.9
3/4"				41					4.1			1.6		0,5	1.1
W3-1,5	Screwed Rc, NPT	1/2"	0,01 - 0,15	1.45 - 21.8	150	302	123	39	28	4.8	1.5	1.1	Brass C3771	0,6	1.3
		3/4"					135		34	5.3		1.4		0,7	1.5
1/2"		0,06 - 0,3	8.7 - 43.5	123			28		4.8	1.1		0,6		1.3	
3/4"				135			34		5.3	1.4		0,7		1.5	